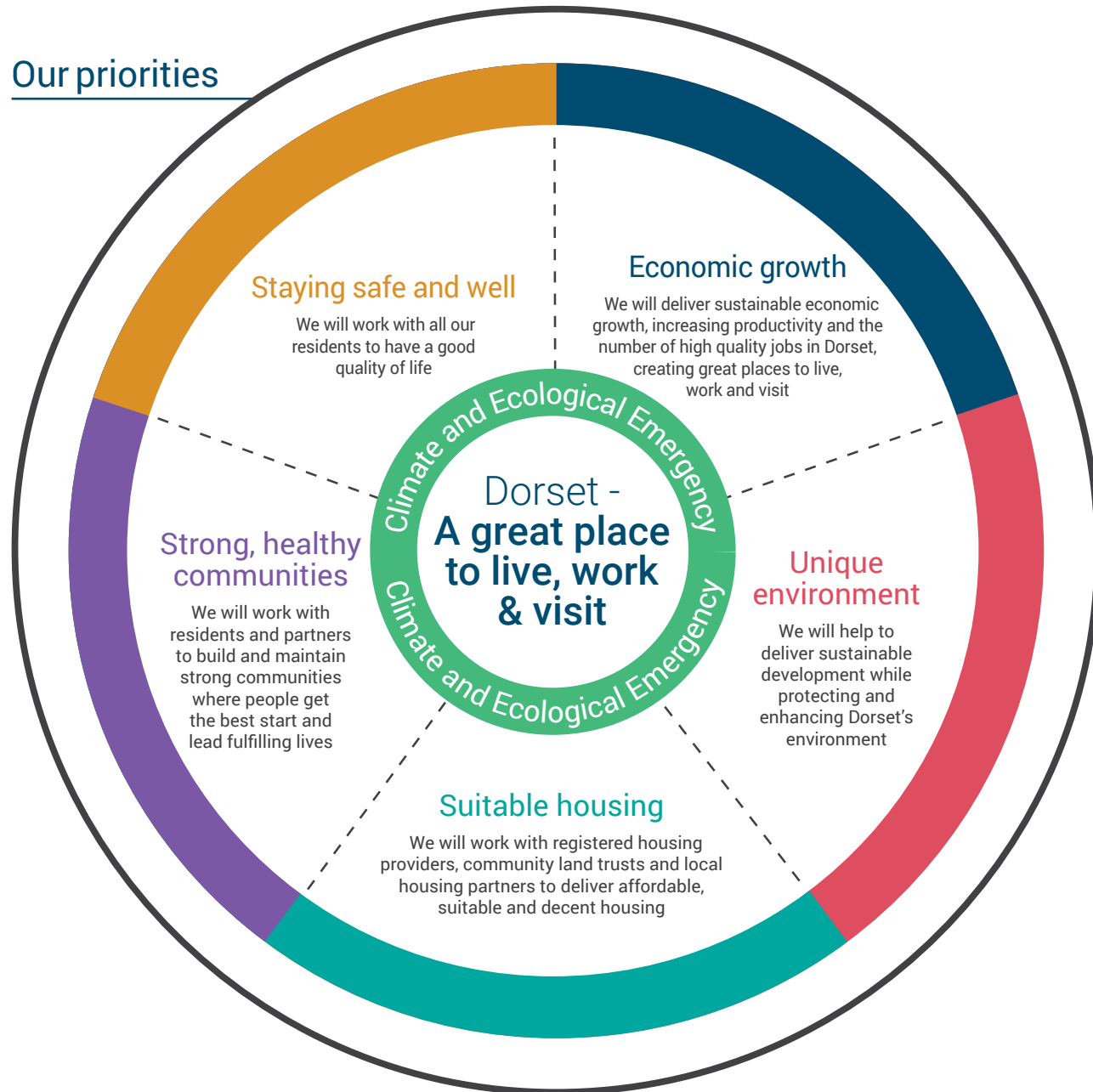


Our priorities



What we will do?

Economic growth

- Promote Dorset as a place to do business and attract inward investment
- Support the growth of new and existing businesses, and in turn support job creation
- Improve the provision and use of sustainable transport and digital connectivity
- Enhance people's aspirations and skills to improve social mobility
- Support growth in Dorset's low carbon economy and skills

Unique environment

- Improve access to our coast, countryside and greenspaces
- Deliver services in ways that protect our natural, historic and cultural environments
- Promote behavioural change to reduce waste and increase reuse and recycling
- Lead and support communities to respond to climate and ecological change
- Capitalise on Dorset's unique environmental assets to support our priorities
- Provide an environment that attracts business investment, tourism and a skilled workforce
- Protect Dorset's natural biodiversity
- Build and celebrate community pride in our environment to help keep it clean and safe
- Support the development of appropriately located renewable energy

Suitable housing

- Maximise the use of council assets to develop affordable and sustainable housing, including the creation of more social rented housing
- Bring long-term empty properties back into use
- Support people to access the right accommodation
- Raise standards of privately rented homes, using appropriate legislation
- Promote energy efficiency and green initiatives within the housing sector
- Implement a new single Dorset Council housing register
- Adopt a new Dorset Council Local Plan by 2024

Strong, healthy communities

- Work to improve the economic, social, cultural and environmental wellbeing of the area
- Support communities to be connected, inclusive, safe and active
- Enable people to feel a sense of belonging and to participate actively in their community
- Aim to increase people's healthy life expectancy and reduce differences between areas
- Provide additional support to communities with the greatest challenges
- Improve outcomes for children, and focus on narrowing the gap for the most vulnerable
- Keep Dorset connected, with better transport and digital links between communities

Staying safe and well

- Make Dorset the best place to be a child; where communities thrive, and families are supported to be the best they can be
- Ensure our children achieve the best educational results they're capable of
- Support older people and disabled people to live independently in their own homes and, when this isn't possible, provide high quality care
- Focus on getting it right first time, proactively providing early help as needs arise
- Build and support capacity in voluntary, community and social enterprise organisations
- Work to protect children and vulnerable adults and prevent them from being exploited