

Dorset Integrated Care System

Integrated Care Partnership Strategy- Proposed Approach

Sam Crowe

Director of Public Health

30 March 2022

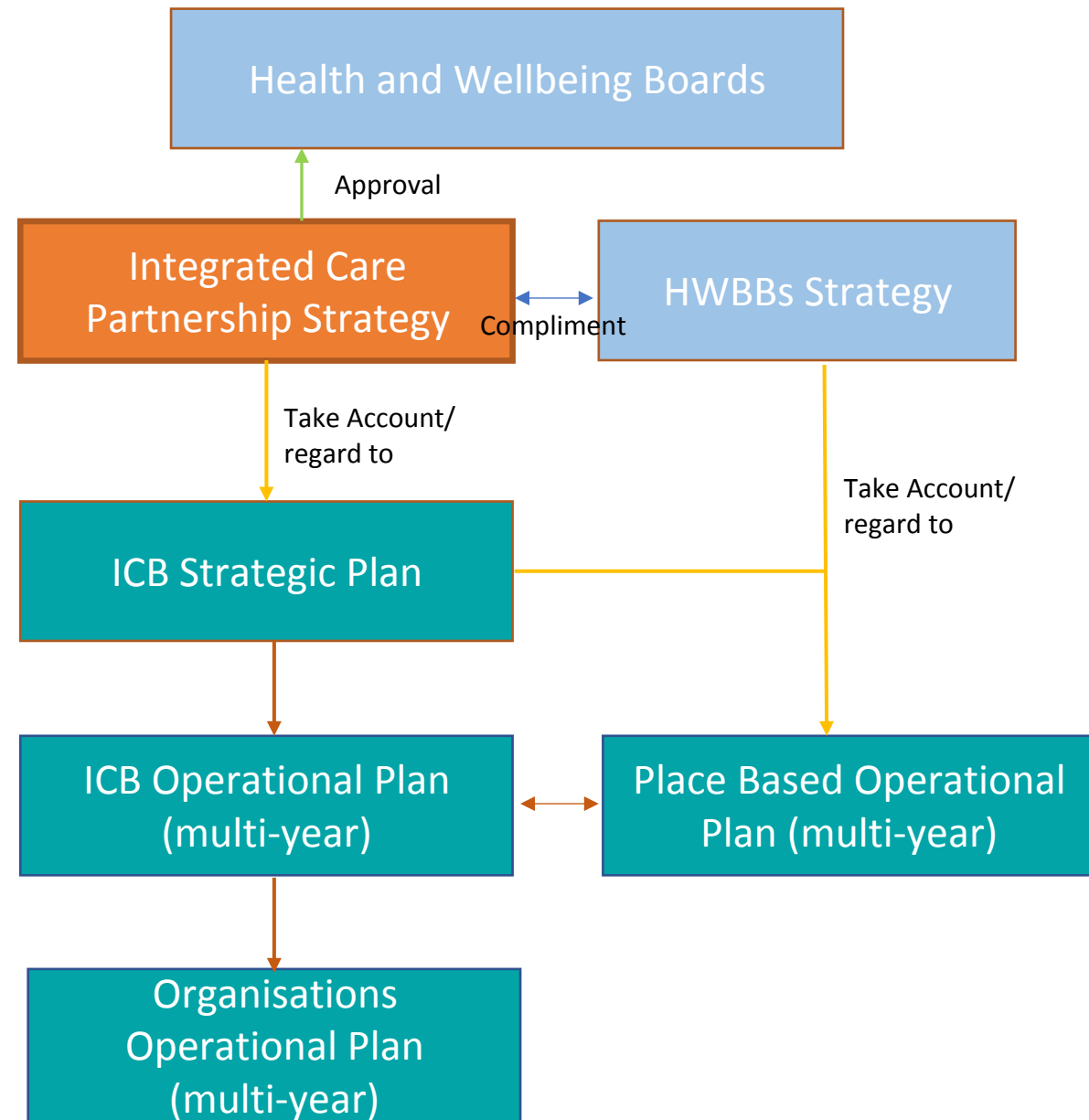


Purpose

- Overview of requirements
- Reminder of what we have in place
- Consideration and endorsement of the approach to developing the strategy
- Commitment from all partners to the ICP Strategy
- Questions/ agreement required:
 1. Do you agree with the 6 month timescale and approach?
 2. Do you agree with the design principles for development of the strategy?
 3. How does the ICP Strategy and H&WB Strategies join up?
 4. What are the 2- 3 questions we need to ask communities?

Health and Care Bill Strategy and Planning Requirements

- Integrated Care Partnership responsible for:
 - Developing and agreeing an **integrated care strategy** for improving health care, social care and public health across the whole population including wider determinants of health such as employment, environment, and housing issues
 - Sets out how the needs identified in the JSNA will be addressed (NHS and LA) complemented by the HWB
 - Demonstrate progress in reducing inequalities and improving outcomes
- ICS NHS Board responsible for:
 - developing a 5 year strategic plan for delivering the NHS contribution to the integrated care strategy
 - Capital plan
 - ICS Operational plan
- Organisations, provider collaboratives and place
 - Responsible for delivery of operational plans



- Addressing the broad health and social care needs of the population, including employment, environment, and housing issues, highlighting where coordination is needed on health and care issues such as:
 - helping people live more independent, healthier lives for longer
 - taking a holistic view of people's interactions with services across the system and the different pathways within it
 - addressing inequalities in health and wellbeing outcomes, experiences and access to health services
 - improving the wider social determinants that drive these inequalities, including employment, housing, education environment, and reducing offending
 - improving the life chances and health outcomes of babies, children and young people
 - improving people's overall wellbeing and preventing ill-health
- ICBs and LAs will be required by law to have regard to the ICP's strategy when making decisions, commissioning and delivering services

Consider:

- What do members feel the strategy should cover?
- Should it only cover the areas we can make a difference together?

What do we have in place

- System:
 - Sustainability and Transformation Plan
 - Long Term Plan
 - Joint Strategic Needs Assessment
 - Collaboration between HWBBs
- Dorset and BCP:
 - LA Corporate Plan
 - Health and Wellbeing Strategies
 - Joint Strategic Needs Assessment
- Organisational:
 - NHS Organisational strategies and annual plans
 - LA strategies

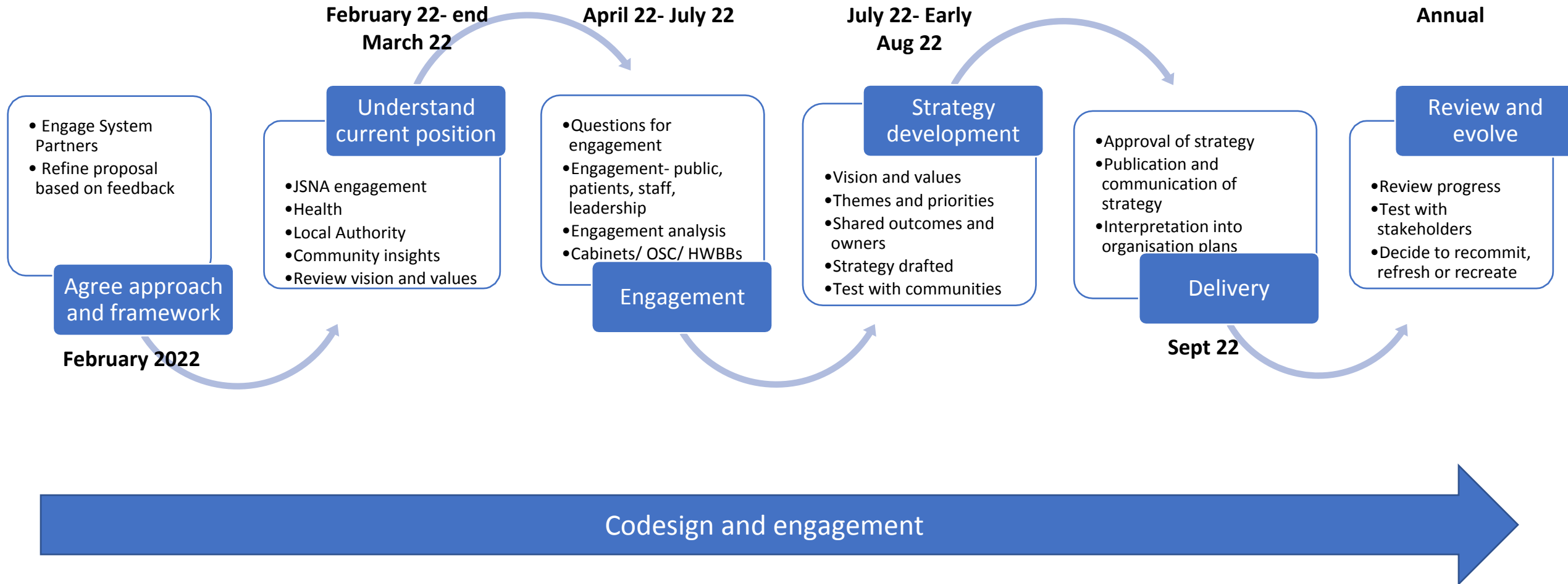


Dorset Integrated Care Partnership Strategy- Design Principles

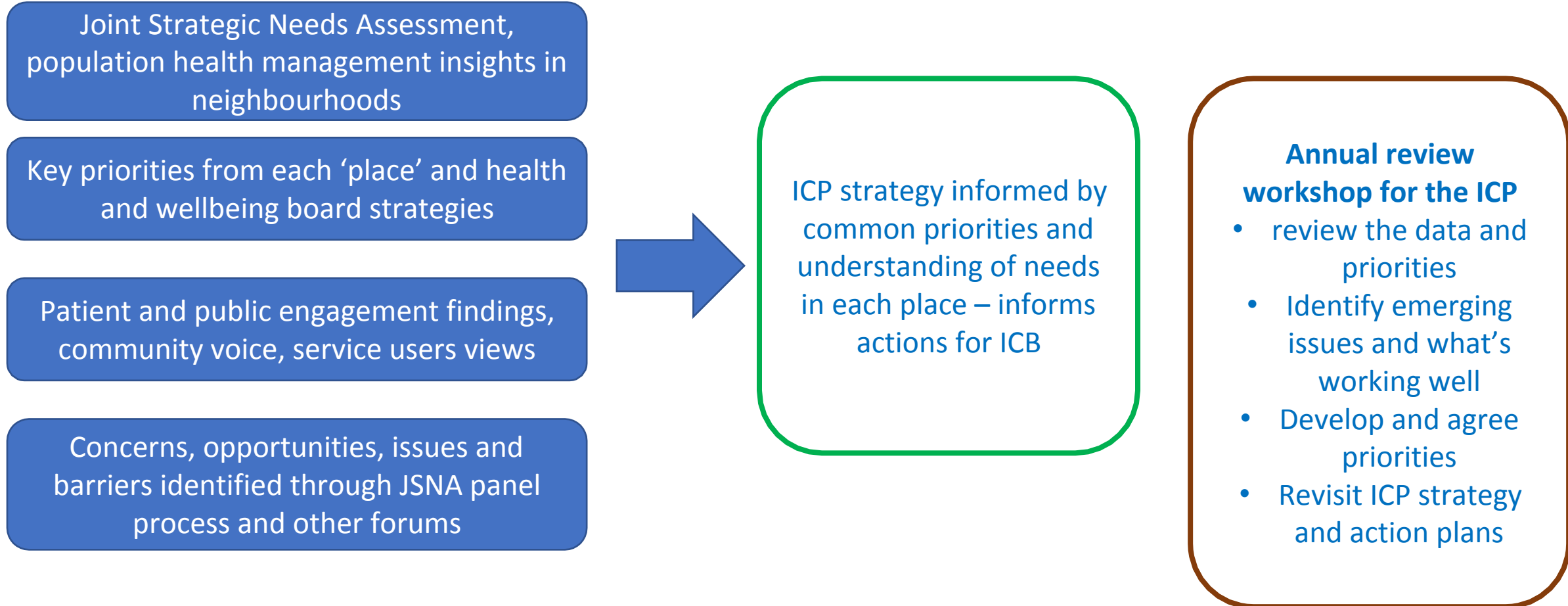
- Need a common message for employees and public
- Opportunity to do things differently
 - not a tick box exercise
- Shared commitment from all partners
 - codesign approach
 - joint working with ICS partners to develop the strategy
- Codesigned with communities
 - engage and understand
 - what support do people need to live their best lives?
- Take time
 - continues conversations and communication
 - regular review and refresh

Development Process

- Timelines are indicative- 6 months proposed to develop and sign off
- View seeking/ discovery (engagement)- ongoing
- Responsive and adaptable to changes in local needs



Process: creating a strong partnership strategy based on population needs



Questions

1. Do you agree with the timescale and approach?
2. Do you agree with the design principles for development of the strategy?
3. How does the ICP Strategy and H&WB Strategies join up?
4. What are the 2-3 questions we need to ask communities?
5. Do you support a development session to work through JSNA and engagement insights to develop a Dorset HWB view of priorities and important themes:
 - Population health outcomes and inequalities
 - Health and care pathways
 - Opportunities to work differently

White paper additional timelines

1. Light touch guidance for ICPs to be issued July 2022 – won't be detailed or proscriptive
2. ICP strategy required by all systems December 2022
3. Guidance expected on how HWBs will work with PbPs and ICPs
4. ICB 5 year plan required by April 2023
5. Shared outcomes framework agreed locally by April 2023
6. Place-based plans agreed and in place by April 2023
7. Move to delegated budgets and pooled resources at place level by 2026
8. Population health platform to support joined up care – 2025
9. National priorities and operating plan will continue to be set – but local places can agree additional priorities